

CPA Panel 4.XX Firmware Update Instructions

These step-by-step instructions guide you on updating the firmware on CPA 4.XX model Cryomech compressors.

This instruction applies only to compressors with 4.XX versions of firmware. Customers with 1.XX, 2.XX, or 3.XX should visit <https://bluefors.com/support/> for assistance or contact Cryomech product support.

First section contains instructions for saving your compressor's information to the USB drive and the second section instructs on how to update the firmware after that.

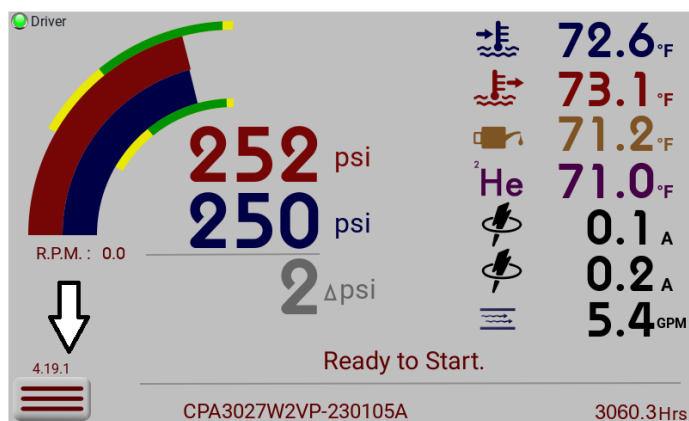
Tools required:

- USB memory stick (thumb drive)
- Computer with access to the internet

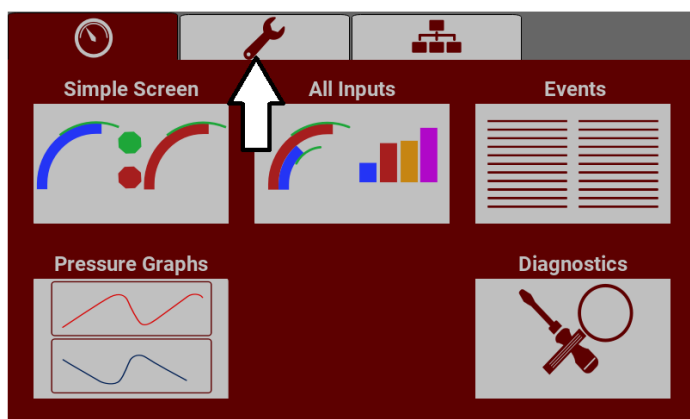
Preparing for the update

After you have placed the "UpdatePackage.zip" on a thumb drive, place the drive in the compressor's USB port. Note: Do not unzip the file.

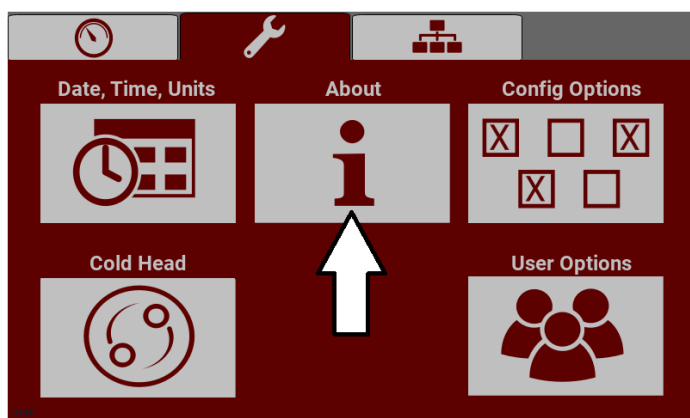
1. Starting on the default "All Inputs" screen, click on the Menu button.



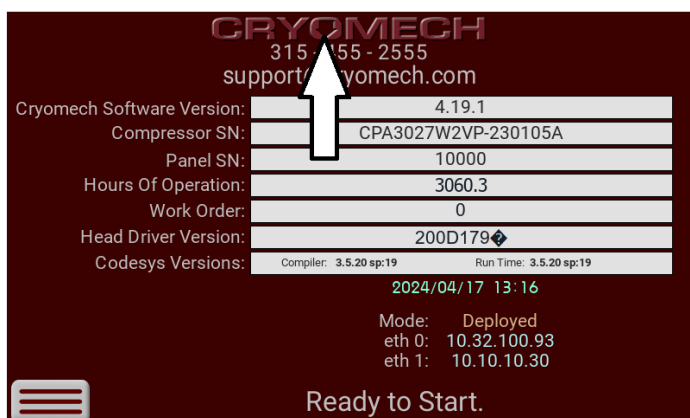
- Next click on the configs tab (one with the wrench icon)



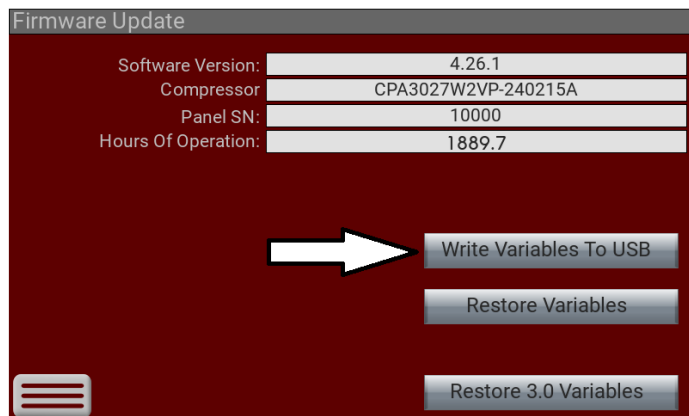
- Now choose the "About" screen.



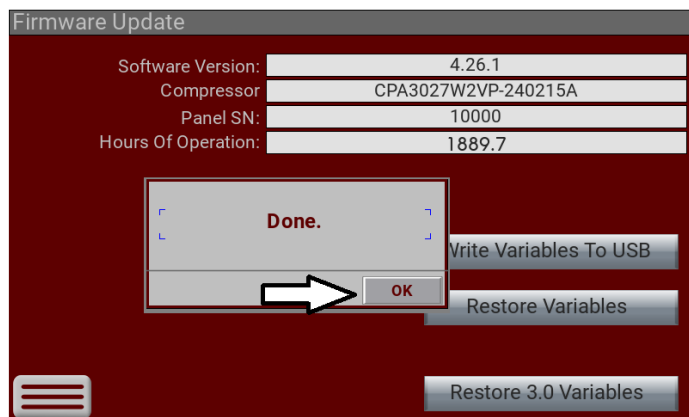
- Press down on the 'O' in the Cryomech name and hold for about 6 seconds.



5. You are now on a special firmware update screen. Click on the “Write Variables to USB” button.



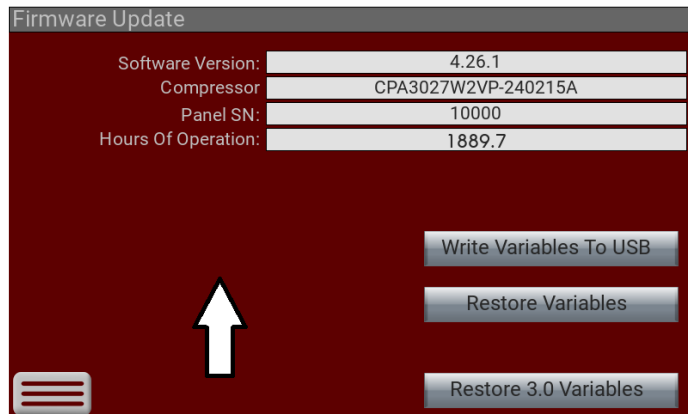
6. In short order you should see a box pop up saying that it is done. Click OK.



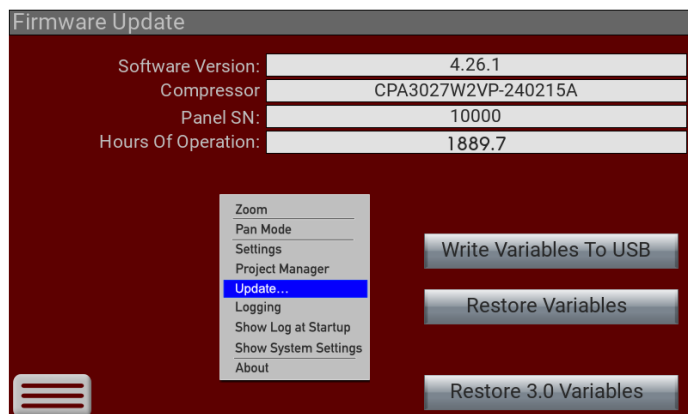
What you just did was save off to the USB drive information about what model compressor you are running and other such important information.

Updating the firmware

- Now we are going to update the firmware. Press down on the empty area of the screen and hold your finger there for about 6 seconds.



- You should now see a small popup menu. Select "Update" from the list.

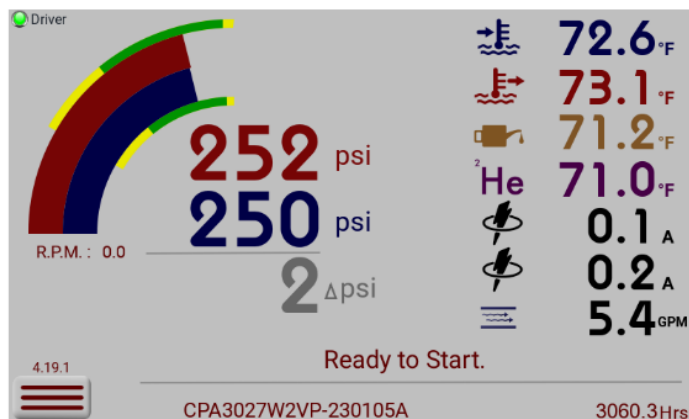


- Once the update process starts, you will see an HMI Update Wizard window. Tap on the “Next” button to get it started.

NOTE: It is VERY slow to respond, so allow 30 seconds before trying to tap it again.

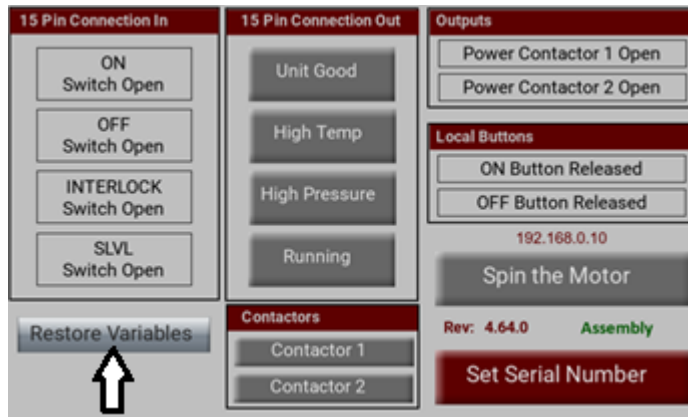


- When the update process is complete, the system will restart and you will have one of two results depending on how old the original firmware was. If the update completes and you return to the “All Inputs” screen, you are done. You can double check the “About” screen to confirm everything is restored properly.



On the other hand, if the system comes up in the following screen, we have a couple extra steps.

11. Start by clicking on the “Restore Variables” button.



12. The system should now return to the “All Inputs” screen.

